

JHF

Product Introduction



Model: JHF F5900

JHF
JHF Technology Group Co., Ltd



----- **3.2mx2m Wide Flatbed UV Industrial Printer** -----

Ps: Computer is optional

Introduction



- ◆ F5900 delivers multiple layers printing with white or varnish.
- ◆ F5900 variable ink droplet technology ensures that stunning images can be printed on a variety of media with high speed.
- ◆ F5900 covers wide application fields, including sheet metal processing, architectural ceramics, decorative flooring, packaging paperboard and others. And it realizes the instant delivery of industrial production from customized design to terminal products.

Technical Specifications

Printhead	Kyocera (4C+W)*2 / Ricoh G6 (2 to 8 heads) / Konica Minolta (6PL or 13PL), 6C+W (optional)					
Ink	Environmental UV Ink					
Curing	LED UV Curing					
Printing speed	Kyocera (4C+W)*2		Ricoh G6 (2 to 8 heads)		KM (6PL or 13PL), 6C+W	
	600×1200 dpi	150m2/h	720×600 dpi	45 m2/h	540×720 dpi	60 m2/h
	600×1800 dpi	100m2/h	720×900 dpi	37 m2/h	540×1080 dpi	43 m2/h
	1200×1200 dpi	80m2/h	720×1200 dpi	28 m2/h	540×1440 dpi	31 m2/h
	ps: theoretical parameters					
Printing Media	Foam board, Acrylic, Aluminum composite panel, Glass, Wood board and other rigid materials.					
Printing Size	3200mm x 2000 mm					
Printing Thickness	60mm(120mm optional)-cooling LED UV lamp					
Max Bearing Weight	50 kg/m2 (uniform loading)					

Technical Specifications

Interface	PCIE/Ethernet interface/USB
Carriage Driven	Linear-driven printhead carriage
Rip Saware	PrintFactory / Caldera (optional)
Power	Three phase, 380V, 11.5KW
Working Environment	18 – 28°C, 30 – 70% RH
Air Pressure	≥8 kg/ cm2
Machine Size	5250 mm x 2650 mm x 1500 mm
Machine Weight	1650kg

ps: theoretical parameters/Multi-rolls kit, pls kindly note it is optional with extra cost if need to order.

Dedicated in Details



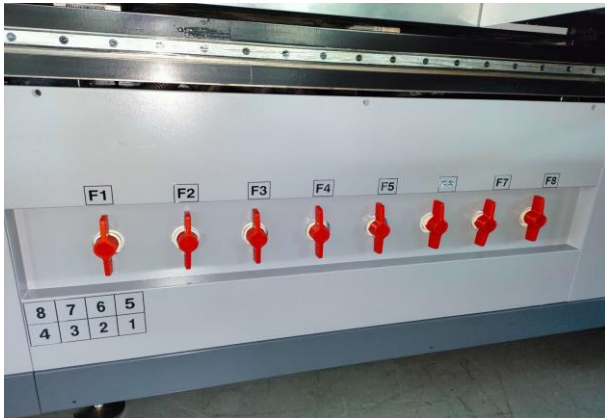
Automatic Safety System



Water-cooling Vacuum Table



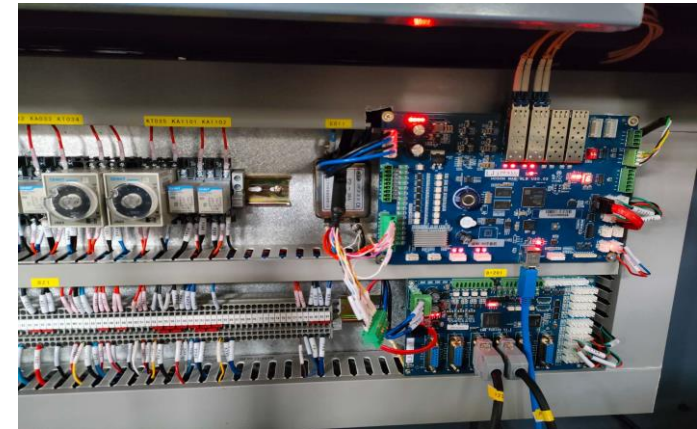
Guide screw driven at Y axis



distribution valve



Ink tank



Switchboard

Core Technology

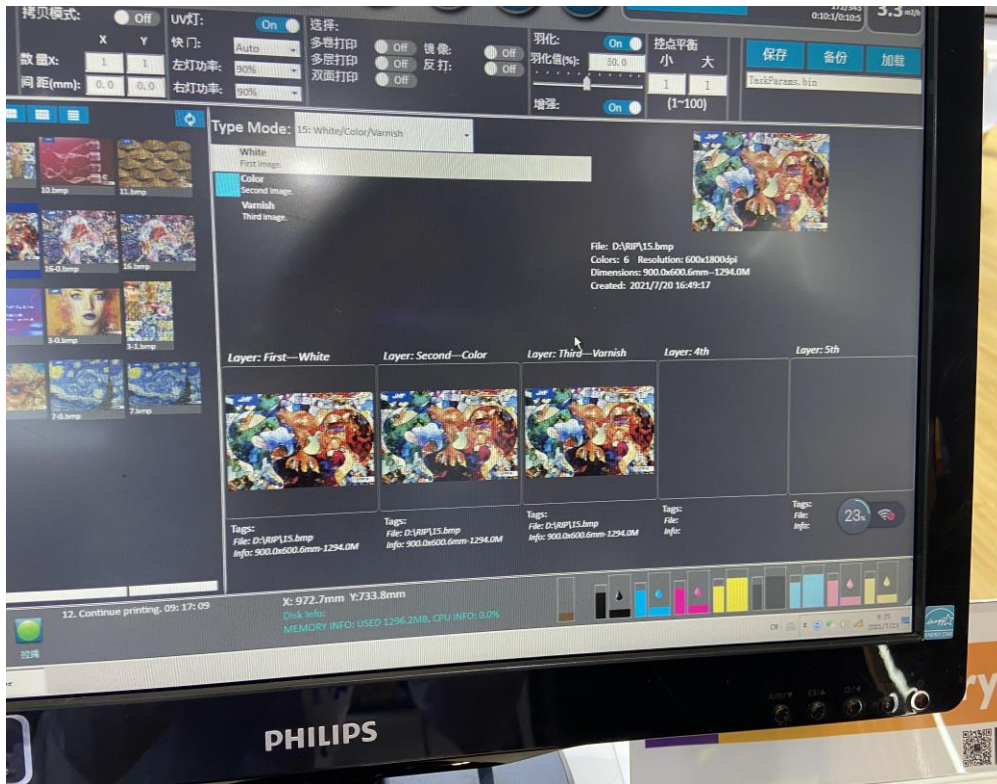


Separate Vacuum Absorption Table

- F5900 owns 8 separate absorption zones on its vacuum table, in which each zone can be freely controlled based on the size of the substrate, thereby reducing energy consumption.



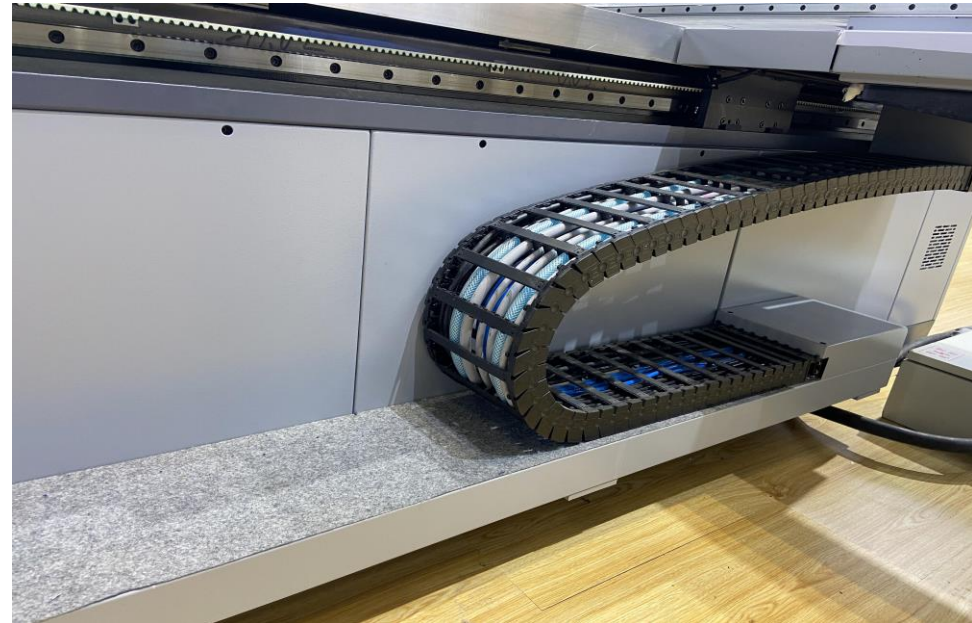
User-friendly controlling System



- Negative pressure controlling system for white, color and ink to guarantee the fluidity of every single color of ink and prolong the lifespan of head from clogging and sediment.
- Multi-layers with white can be printed at the same time, right now it can support 5 layers printing.

Robust Towline

- Its well-performanced towline ensures a safe supply of energy and data while under constant motion.



Solutions

- F5900 covers wide application fields, including sheet metal processing, architectural ceramics, decorative flooring, packaging paperboard and others. And it realizes the instant delivery of industrial production from customized design to terminal products.



Product Features



Product Features



- Multi Customized Configurations on Printing
- Decreased Compressed Air by 90%
- Unique Sub-tank Controlling Technology
- Tri-Negative Pressure Controlling System
- Separate Vacuum Absorption Table
- Multi Layers Printing

Product Features

◆ Anti-Collision Device

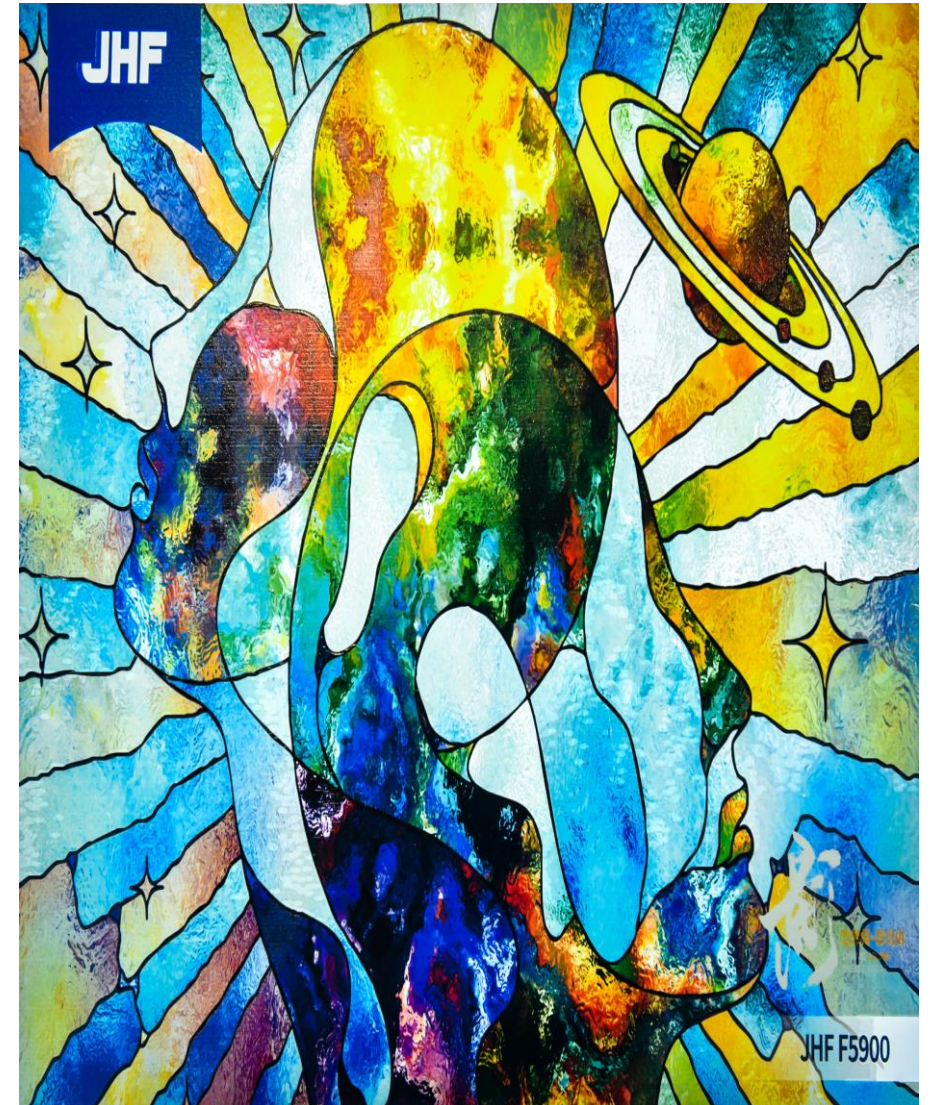
The carriage is equipped with anti-crash media detectors. When the sensor detects the obstructions on the vacuum table, the printer will stop the carriage emergently to prevent damage to the heads and protect personal safety as well.

◆ Accurate Stepping and Spot

Installed with dual servo motors for Y-axis and linear-driven motor for X-axis, the misalignment in front and rear sides can be detected, improving the stepping accuracy as well as the table accuracy.

◆ Auto Height Adjustment

Fully automatic carriage liing system and customized motor ensure the precise positioning control of the whole platform, which meet printing demand of dierent heights at any point.

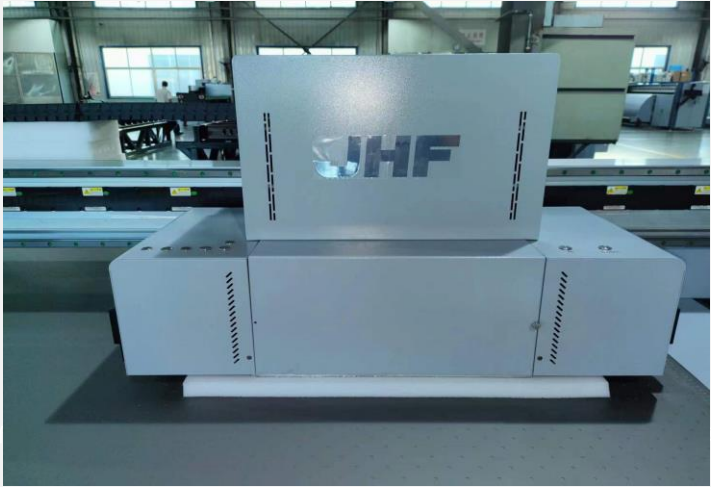


Transport information



Transport information

G.W.(kgs)	2350
Length	5.4
Width	2.26
Hight	2.54
CBM	31CBM
Container size	40HQ



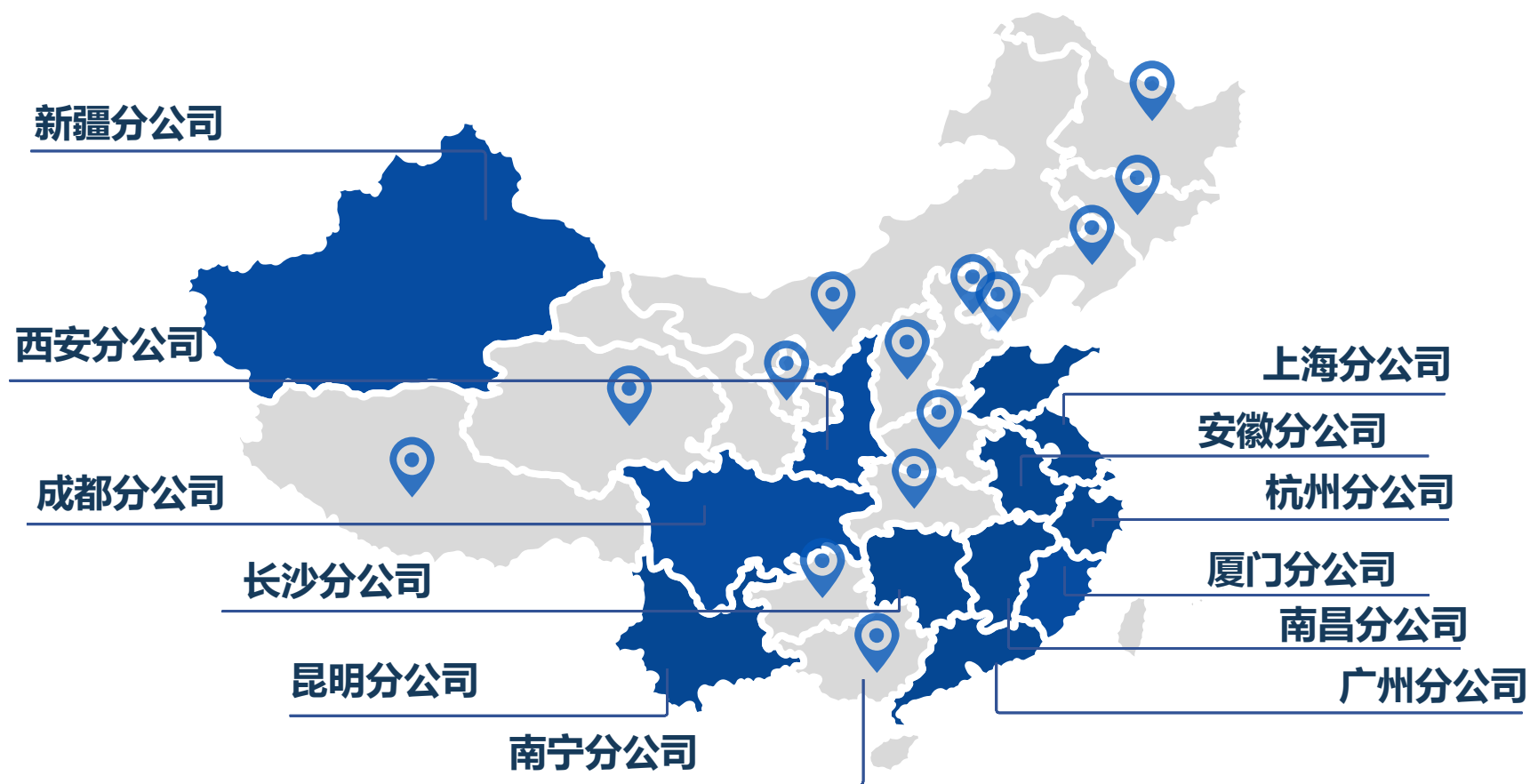


JHF

The Future of Imaging

覆盖全国的服务体系

Company Domestic Layout



12大区域分公司、30多家代理商及遍布全国的服务网点

业务覆盖国内外近百个国家和地区

Company Global Layout

